



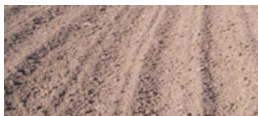
Knowledge grows

# Squash Crop Nutrition

## Soil & Foliar Programme



Date:  
Grower:  
Reference:  
Area:



Crop Stage

Pre planting / planting

Emergence

Pre flower

Fruitset

Fruit development

YaraVita™

Molytrac  
250 mls/ha

Molybor  
2 L/ha

Magflo 300  
4 L/ha

Croplift K  
5 kg/ha

YaraVita™

Croplift  
5 kg/ha

GOEMAR

Calibra  
2 L/ha

Calibra  
2 L/ha

Calibra  
2 L/ha

Calibra  
2 L/ha

YaraMila™

8-11-20  
300 kg/ha

YaraLiva™

Nitrabor  
200 kg/ha

YaraBela™

or  
CAN27  
150 kg/ha

**Contact details:**

Mark Redshaw -North Island Sales Agronomist

Ph: 021 471-722

Email: mark.redshaw@yara.com

In developing the correct programme of products, soil and tissue analysis should always be used to help make decisions on product application. To the best of Yara's knowledge and belief the information contained herein is accurate as of the date compiled. However, Yara makes no representation, warranty or guarantee as to the information's accuracy, reliability, completeness, timeliness and/or use. It is the users responsibility to determine the suitability and completeness of such information for the user's own particular use or purposes. Such information must be adapted to suit local conditions and the user should always read the label for each product before use. Yara does not accept any liability for any loss or damage that may occur from any use of this information

 Foliar applied products

 Soil applied products